

Environmental Emergencies Centre

What is the EEC?

The Environmental Emergencies Centre (EEC) is an online tool designed to strengthen the capacities of national responders and humanitarians to respond to environmental emergencies. It serves as a main knowledge hub and allows users to build on their own mechanisms and to draw on the resources and services of EEC partners.

What service does it offer?

The EEC provides users with a one-stop-shop of information relevant to the preparedness, prevention and response stages of an environmental emergency. It includes links to the online trainings and provides all necessary information for the deployment of environmental experts.

Available on the EEC



Five Online Learning
courses



A Resource Library
featuring guidelines,
reports, publications and
key tools such as NEAT +



An Insights section
featuring updates
on news, events and
initiatives



A Partners section
containing
information on
JEU networks and
partners

EEC Knowledge Hub

The Environmental Emergencies Centre was established in 2012, with the support of Norway and Sweden. It draws on the resources, services and expertise of EEC partners, allowing users to access a wide range of tools and services. The UNEP/OCHA Joint Environment Unit (JEU) acts as the custodian of the site.

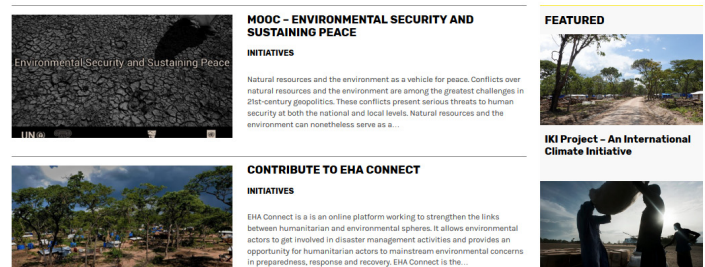
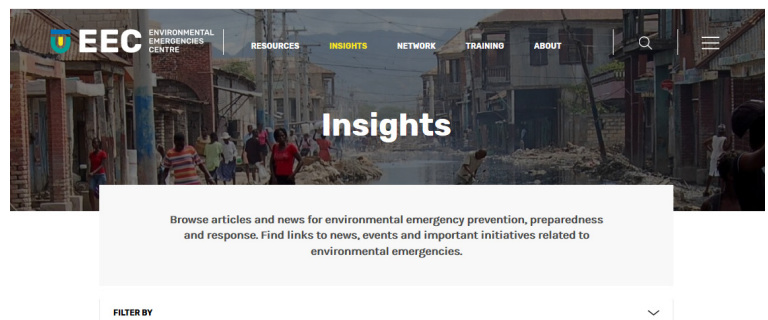
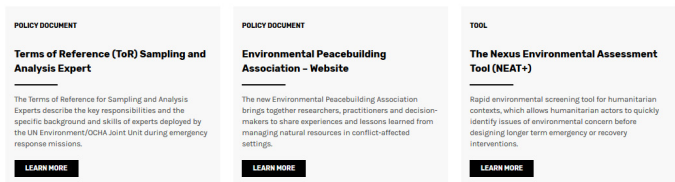
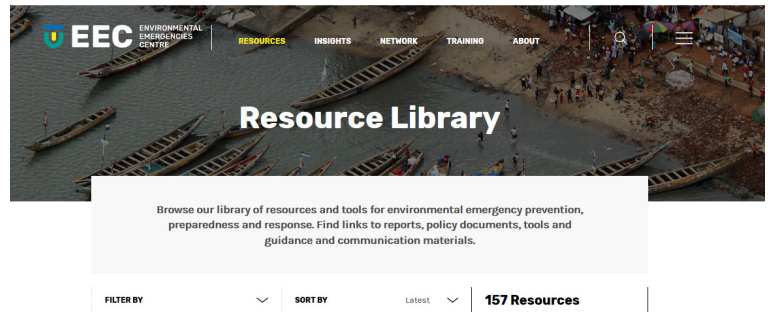
The EEC features:

A searchable Resource library with tools, guidelines, mission reports and case studies. More tailored guidance and resources for humanitarian contexts can be found on the EHA Connect website (<https://ehaconnect.org>).

A searchable Insights page, offering updates on advocacy initiatives, blog posts on current news and events as well as articles and publications related to environmental emergencies.

A Training section, offering free Online Learning courses in multiple languages on how to prepare for, and respond to, the environmental dimensions of emergencies. For more information, please visit the online learning platform: <https://learning.eecentre.org>, or read our fact sheet dedicated to the online modules.

A Network Partner section, highlighting EEC partners and networks with links to their respective websites and associated guidance.



The JEU invites everyone to contribute to the EECentre. If you would like to contribute, please send your inputs, comments and suggestions to the JEU at: ochaunep@un.org

Joint Environment Unit:

The United Nations Environment Programme (UNEP) and the UN Office for the Coordination of Humanitarian Affairs (OCHA) respond as one UN to the environmental dimensions of emergencies. The partnership assists countries affected by disasters and crises and works to enhance the sustainability of humanitarian action.

Contact information

UNEP/OCHA Joint Environment Unit
OCHA Response Support Branch
Geneva, Switzerland

Email: ochaunep@un.org
www.unocha.org/unep
www.eecentre.org
<https://ehaconnect.org>